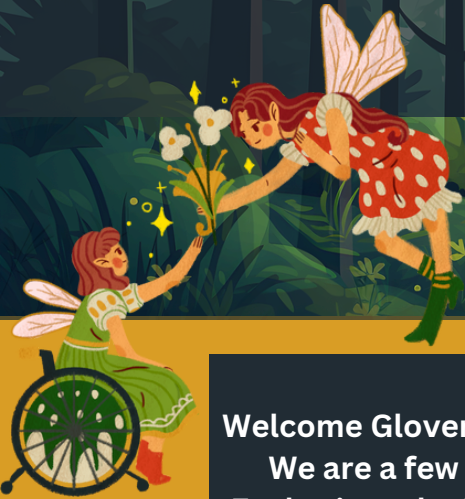


Eagle News

THE MAGICAL WORLD OF LEARNING

08. 02. 2024



Welcome Glover families to the 24-25 school year. We are a few days away from welcoming our Eagles into the Magical World of Learning. Please take time to read through this week's newsletter as it includes a lot of information for Back to School and includes resources to help make the transition back to school easier.

What's In This Month's Issue?

- Welcome Back
- Back to School Tasks
- Upcoming Events
- Meet the Teacher Night
- T-Shirt Pre-Sale
- FBISD Parent Resources Links
- Extended Day Flyer

Back to School Tasks

1. Skyward Family Access is now open! ~ To update forms electronically, log in to Family Access, click on student's information and sign and date the forms. You will need to complete one set of forms for each student. Starting the first week in August, GE parents can view teacher assignments and student schedules in Skyward Family Access only if all forms have been completed electronically.
2. The Fort Bend ISD School Supply List can be found on the district webpage.
3. You can find parent resources on the FBISD main webpage. Information on the site includes bus routes, extended learning, a district calendar, and more!
4. Money can be added to your child's cafeteria account throughout the school year online. To access your account, click here. If your student is new to the district, you must create a new account. The 2024-2025 Free and Reduced Meal Application will be open August 1st.
5. EGE Friday Newsletter will be sent at the end of each instructional week via Blackboard Connect. Please update your contact information, so your family receives this weekly update.



Contact Us

Principal Arana
clementine.arana@fortbendisd.com

Assistant Principal Allen
carissa.allen@fortbendisd.com

Meet The Teacher Night

Meet the Teacher Night will be Tuesday, August 6th, from 5:00 pm-6:30 pm. Meet the Teacher is a come-and go event providing families with the opportunity to meet their child's teacher, locate their child's classroom, and drop off school supplies. To ensure that each family has a great experience at the Meet the Teacher event, we will have times to meet all staff, have a brief overview with the leadership team, and then rotations to visit classrooms. This will reduce over-crowding opportunities and provide families with siblings in grade levels to have adequate time to meet their teachers. We ask that only immediate family members attend the event.



FBISD Parent Links & Resources

- [Volunteer Background Check](#)
- [GE Parent/Student Handbook](#)
- [Free and Reduced Lunch Application](#)
- [Parent Resources](#)
- [GE Twitter](#)
- [GE Website](#)
- [FBISD 24-25 Calendar](#)
- [Student Code Of Conduct](#)
- [GT Newsletter](#)

UPCOMING EVENTS!

Monday August 5th - Kindergarten Orientation 5:00 p.m.

Tuesday August 6th - Meet The Teacher 5:00 p.m.

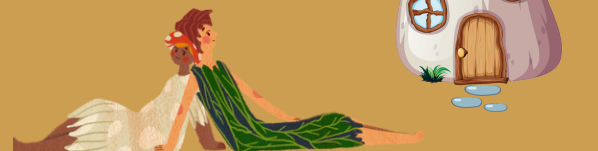
Thursday August 8th - First Day of School

Monday September 2nd - Labor Day (No School)

Friday September 6th- Grandparents Luncheon

Thursday September 26th - Early Release/Parent Conference Day (12:10 p.m.)

Friday September 27th- Student Holiday (No School)



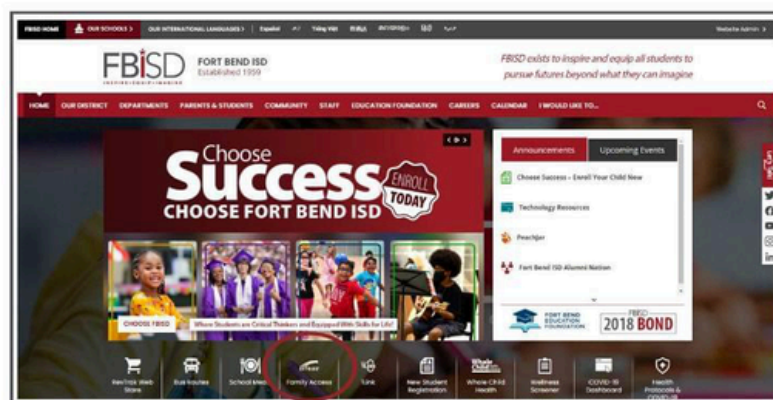
Update your student's information online!

In advance of the 2024-2025 school year, parents are asked to log into Family Access to update their student's information forms. These forms are required for all students, both returning and new to Fort Bend ISD. Parents without Family Access accounts may request access from their student's home campus. Please note, the 2024-25 FBISD Student/Parent Handbook and Student Code of Conduct will be available for review on the Student Affairs website.



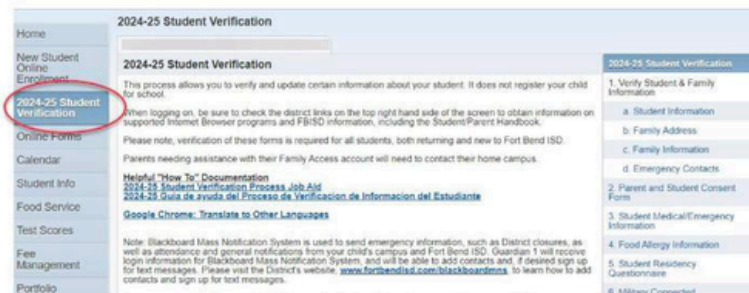
The following forms are part of this year's online verification process:

- **Student & Family Information Verification**
Verify and update parent contact information and more. Note: A portion of this information will affect default communications from Blackboard Connect, the FBISD mass notification system.*
- **Parent and Student Consent Form**
This checklist addresses the directory information, photo release and your student's technology use.
- **Medical/Emergency Information**
- **Student Residency Questionnaire**
- **Military Connected Form**
- **Student BYOD (Bring Your Own Device) Use Agreement**
- **Migrant Family Survey**
- **Child Nutrition Acknowledgment**
Visit www.fortbendisd.com/childnutrition.
- **Grade-Specific Opt-In & Notification Forms**



Log In Here

Next Click Here



For assistance with the Student Verification Process, please visit: <https://www.fortbendisd.com/skywardparenthelp>

**Blackboard Mass Notification System is used to communicate District closures and other messages from your child's campus. Please visit the District's website, www.fortbendisd.com/blackboardmns to learn how to add contacts and sign up for text messages.*

Important Resources for Parents

As a reminder, parents can also find more helpful information regarding:

- **Education Foundation** - www.fortbendisd.com/foundation
- **Extended Learning** - www.fortbendisd.com/extendedlearning
- **Dietary Accommodations** - www.fortbendisd.com/specialdiet
- **McKinney-Vento Program** - www.fortbendisd.com/mckinneyvento



Back To School RESOURCES

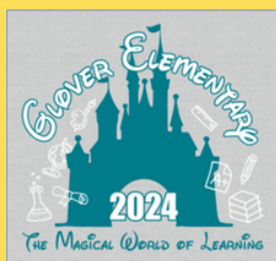
Student school shirt sales

Our Glover ES Spirit Shirt page is live at the web store.

Get our 24-25 school shirt for \$20. Click the link below to order online. All shirt orders are pre-sale.

Link:

<https://fortbendisd.revtrak.net/es/glover-elementary-school/glover-es-spirit-wear-/#/v/glover-es-spirit-shirts>



First Day of School Expectations

1. Arrival/Dismissal: On the 1st day of school, parents will be able to walk their child to their classrooms starting at **7:30 a.m.** **All parents must be out of the building by 8:10 am.** so we may begin the day. On Friday, parents of students attending the 1st day and any Kinder parents may be able to walk their kids to their class until 8:10.

Parents, please ensure all students are being dropped off through the car rider line. Due to safety concerns, please **only park and walk students to the front office if you are meeting with a staff member** or unless it is 8:05 a.m. and you are signing your child in for late arrival.

Also, for dismissal, parents should not walk up to the car rider line to pick a student up. If you want to walk and meet your student, students should be listed as a walker, and you can meet them on the side of the school across from the bus ramp.

2. **Campus Behavior Expectations** – Parents, please review our schoolwide expectations with your students. We expect S.O.A.R. S.O.A.R. stands for Safety, Ownership, Achievement, and Respect. We want to focus on these traits to ensure we have a safe, positive environment conducive to learning.

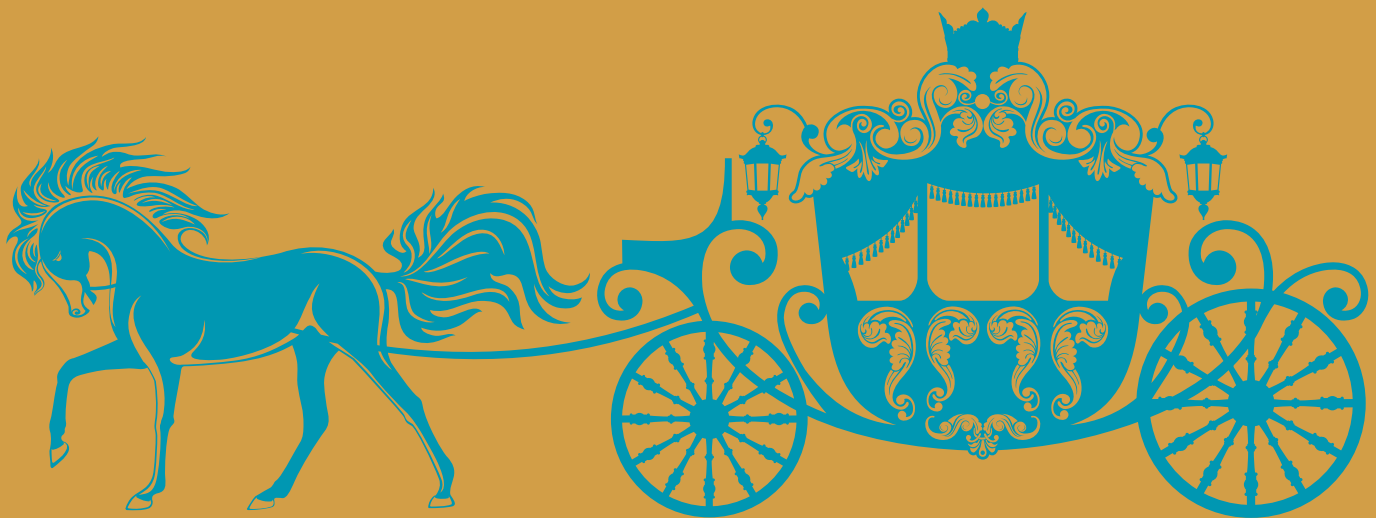
3. Check out this month's GT [newsletter](#) for information of FBISD's Gifted and Talented Program.

SAFETY IS MAGICAL

If transportation changes after the first day of school, email the teacher or call the front office at (281) 634-4920.

- **All CAR RIDERS must be picked up and dropped off in the car rider line.**
- **NO drop off at the BUS RAMP.**
- **NO PARKING and walking your student in.**
- **PLEASE follow traffic laws on and around campus during pickup and drop off.**

Fort Bend ISD PD will be on and around campus for you and your students safety lets work together as a campus to be successful and safe!



C O O L

Ask Questions

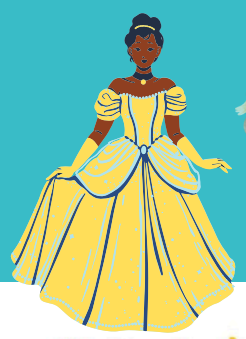
MEET THE TEACHER NIGHT

Tuesday August 6th

Edgar Glover Jr. Elementary School

5:00-6:30

Register
and Join
PTO



For More Information Call
Lady Jade Claborn 281.634.0116
Jade.Claborn@fortbendisd.com



Register and
Join PTO



Ask
QUESTIONS



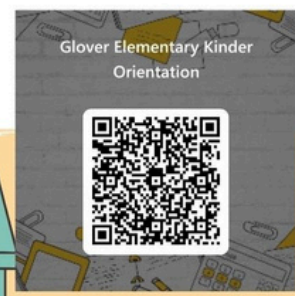
KINDER ORIENTATION

For More Info. Call Lady Jade Claborn
281.634.0116

5:00 - 6:30

Tour
Your
Campus

Meet
Your Teacher



August 5th

GLOVER ELEMNTARY



Parent/Student Handbook Quick Reference Sheet

Please visit the GE Webpage for the link to access the full Parent & Student Handbook.



1

SCHOOL HOURS

School hours are from 8:05-3:25
Campus is open for students from 7:30-4:00 p.m.
Students are able to get breakfast from 7:30- 8:10.



2

COMMUNICATION

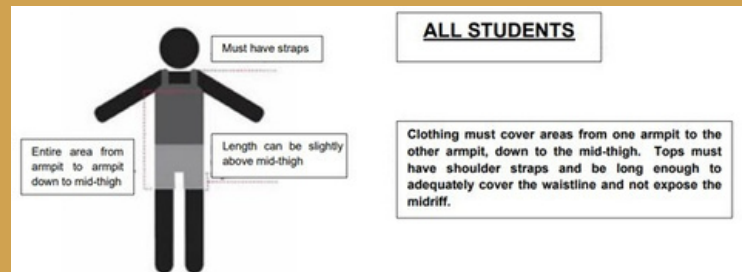
Glover Elementary will use multiple methods to communicate between the campus and families. These include **Blackboard (mass email), Schoology, Skyward, Class Dojo, X, Glover Webpage, and printed flyers in the Tuesday Folders.**



3

DRESS CODE

All students are expected to adhere to the FBISD dress code policy. Students should be dressed appropriately keeping weather in mind. Students are not allowed to wear any unsafe shoes (slides, bubble shoes, foam clogs, etc.)



4

ATTENDANCE

Attendance in school is critical to the overall success of a student. Students are expected to be at school daily and on time. If a student is absent, **please submit an excuse note within 5 days. Failure to attend can result in retention.**

ATTEND TODAY, ACHIEVE TOMORROW

GOOD SCHOOL ATTENDANCE MEANS...



6

CAMPUS VISITATION

The safety of our students and staff is our **top priority**. Any visitor must adhere to our campus/district policy. All visitors must check in at the front office and have a badge. Visitors are not allowed in any instructional areas without approval from campus administrators and an escort from and to the front lobby. Parents wanting to observe instruction, must schedule appointment at least 48 hours in advance.



6

GRADES

All student grades are posted electronically via Skyward. Parents can access Skyward by visiting Fort Bend ISD Skyward Family Access. Printed copies of report cards can be requested through the ADA clerk.

Grades will be updated weekly. Teachers will communicate with parents if students are in danger of failing.



8

FIELD TRIPS

Teachers will plan field trips for students to attend as enrichment of the school curriculum and be in compliance with the FBISD safety and security protocol. All students **must have a signed permission slip** to attend. Parents wanting to attend as a chaperone must complete the **VIP background check**. Student safety is a top priority, therefore students must exhibit positive behavior before and during any field trip.



9

ADDRESSING CONCERNS

Parents should first reach out to their child's teacher to address any concerns. A parent/teacher conference can be made during teacher planning time or before/after school. If the issue has not been resolved, parents may then contact the Counselor or Assistant Principal via email or phone call to schedule a meeting. All staff will respond within **24 to 48 hours**.



7

BEHAVIOR EXPECTATIONS

All Glover Elementary students are subject to following FBISD's Student Code of Conduct. At Glover Elementary we strive for our students to S.O.A.R. S.O.A.R. represents our school wide expectations of **Safety, Ownership, Achievement, and Respect**.

Students will be consistently taught and reminded of the specific guidelines for success daily in all areas of the campus to help them learn and create a positive and fun learning environment. Behavior interventions and consequences will given if students fail to adhere to the campus expectations.

Edgar Glover Elementary Guidelines for Success

	Arrival & Dismissal	Hallway	Cafeteria	Restroom	Recess	Classroom
Safety	Keep hands, feet, and objects to yourself Stay in assigned area	Report problems to adult immediately Stay with your class Walking feet Keep hands and feet to yourself	Hands, feet, objects, and food to yourself Wait your turn Stay seated in assigned spot Eat your own food	Report problems immediately Request everyone's privacy Keep hands and feet to yourself	Level 4 noise Hands, feet, and objects to yourself Be still please Play nicely	Use words to communicate feelings Stay seated unless given permission Use materials correctly Hands and feet to yourself
Ownership	Know your location Walk directly to your area Sit in assigned spot Silent Reading	Follow expectations at all times Stay on the right side of the hallway	Use good table manners Know your lunch number	Make good choices Use equipment appropriately	Be prepared Report problems to the adults immediately	Be honest Be willing to try new things Believe in yourself
Achievement	3- Inches away from the wall 2- Hands by your side 1- Straight line 0- Voice level	3- Inches away from the wall 2- Hands by your side 1- Straight line 0- Voice Level	Follow all directions Clean your area Level 1 noise	Use restrooms and flush Wash hands Throw away trash properly	Listen for directions Use the equipment safely	Participate Do your best work Apply what you know
Respect	Keep hands, feet, and objects to yourself Listen to all staff members Be Kind	Silent greetings Be Kind	Say please and thank you Use kind words Raise your hand if you need help	Wait your turn Take care of your business quickly and quietly Voice level 1	Use kind words Wait your turn	Take care of the room and materials Be Kind Work Cooperatively



10

CELL PHONES

Cell phones should be turned off and not visible at all times during the school day on school property. Cell phones are not allowed at recess. Students in violation of the FBISD cell phone policy are subject to certain actions such as confiscation of the phone until the end of the school day, parent pickup and fine, and/or disciplinary action as outlined in FBISD Student Code of Conduct.

11

SCHEDULE OVERVIEW

	Ancillary	Recess	Lunch	Intervention
Kindergarten	12:10-12:55	10:00-10:30	10:30-11:00	8:45-9:30
1st Grade	1:50-2:35	10:30-11:00	11:00-11:30	1:00-1:45
2nd Grade	1:00-1:45	11:05-11:35	11:35-12:05	10:15-11:00
3rd Grade	10:55-11:40	11:40-12:10	12:10-12:40	9:30-10:15
4th Grade	10:05-10:50	12:10-12:45	12:40-1:10	11:00-11:45
5th Grade	9:15-10:00	12:40-1:10	1:10-1:40	11:45-12:30



Glover Elementary

Attendance Matters!

Plan Ahead.



24-25 School Info

- School begins on Aug. 8 and ends May 29.
- School Hours - 8:05 am - 3:25 pm
- Students are marked tardy after 8:05 am and absent after 10:00 am.
- No Early Pickups after 3:00.

Student Breaks

Thanksgiving Break - Nov. 25-29

Winter Break - Dec. 23-Jan. 8

Spring Break - Mar. 10-14

Fall Student Holidays

*September 2

*September 27

*October 4

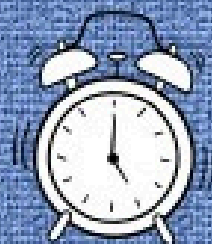
**October 10-15

*November 1

*November 11

*3-Day Weekend

**5-Day Weekend



Spring Student Holidays

*January 20

^February 14-17

*February 28

*March 31

^April 18-21

*May 26

*3-Day Weekend

^4-Day Weekend

Early Dismissal Days

September 26

December 20

February 13

May 29

Students Dismissed at 12:10 pm

We encourage scheduling trips and appointments during student holidays to help minimize preventable absences.



GLOVER ES PTO

The Glover PTO needs

YOU!

WHY JOIN THE PTO?



YOU BENEFIT

Volunteering your time, talents, and energy while socializing with other parents is fun, healthy and rewarding. Being able to contribute and make a positive impact is fulfilling!



OUR SCHOOL BENEFITS

Help create positive, caring and engaging community by supporting the scholars, teachers and administration!



OUR COMMUNITY BENEFITS

Teamwork makes the dream work! By working together we are able to have a positive impact in the world around us.

ANYONE CAN JOIN THE GLOVER PTO!

EMAIL EDGARGLOVERPTO@GMAIL.COM OR JOIN US FOR OUR MONTHLY MEETINGS.



GLOVER ES PTO

Parents & Teachers - We will start collecting dues in September!

Thank you for all of your donations last school year. If you need a receipt please email edgargloverpto@gmail.com

PRESIDENT

Mikole M.

SECRETARY

Marie T.

TREASURER

Josie B.

CURRENT EVENTS

- Meet the Teacher 8/6 5:30pm
- PTO Meeting - 8/21 3:45pm
Location TBD
- PTO Meeting - 9/18
- PTO Meeting - 10/16

STAY IN TOUCH

FOLLOW US ON X (TWITTER)
[@GLOVER_PTO](https://twitter.com/GLOVER_PTO)

SEND AN EMAIL TO GET ON THE
PTO EMAIL LIST
EDGARGLOVERPTO@GMAIL.COM



Glover PTO
Scan to pay \$GloverPTO

If you are interested in holding an office or volunteering this school year, please email edgargloverpto@gmail.com for more information.

News & Events



Fort Bend ISD | Extended Learning

Extended Day Program

The Extended Day Program is for students in kindergarten through Grade 5, open before and after school to keep students safe and engaged.



Homework Time



SPARK Curriculum
and Clubs



Physical Activities

Program Options:

Morning Only
Afternoons Only
Morning & Afternoon Combo

Tuition is paid monthly.

Early Dismissal Day and
Full Service Day child
care is available.

Before School
6:30 a.m. - 7:30 a.m.

After School
3:25 p.m. - 6:30 p.m.

To register, go to
fortbendisd.reg.eleyo.com

ExtendedLearning@fortbendisd.com
fortbendisd.com/ExtendedLearning





brighterbites®



Enroll in Brighter Bites!

School Year 2023 - 2024

Brighter Bites is a new kind of nutrition education program, and it's 100% free! You and your child are invited to a fun food experience where you'll receive ~20 pounds of fresh fruits and vegetables along with tips and tools to support a healthy lifestyle.

Benefits of enrolling in Brighter Bites:

- receive a variety of free fresh fruits & vegetables each Brighter Bites day!
- save money on groceries
- save time at the store
- get involved in your community
- socialize with other parents
- learn how to be healthy on a budget
- discover easy, kid-friendly healthy recipes

**Participation in Brighter Bites does not affect SNAP or WIC benefits.*

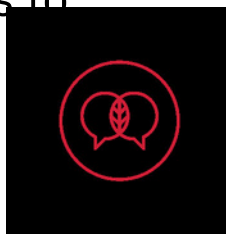


**CLICK TO
ENROLL TODAY!**

OR VISIT

WWW.BRIGHTERBITES.ORG/ENROLL

*Brighter Bites accepts new enrollments throughout
the school year!*



***"Brighter Bites is a
chance to have
more fresh fruits and
vegetables in our home.
My child loves beets
and papaya now!
Thank you,
Brighter Bites!"
- Happy parent***



The better we nourish, the brighter we flourish.

AUSTIN • BAKERSFIELD • DALLAS • HOUSTON • LOS ANGELES • NYC • PHOENIX
SALINAS • SAN ANTONIO • SOUTHWEST FLORIDA • WASHINGTON, D.C.

WWW.BRIGHTERBITES.ORG



FORT BEND COUNTY
JUVENILE PROBATION DEPARTMENT

SCHOOL SUPPLY GIVEAWAY

To assist Fort Bend County students of all ages, Fort Bend County Juvenile Probation Department, in partnership with The Greatest BBQ are giving away a variety of supplies, such as notebooks, pencils, backpacks, and more!



SATURDAY, AUGUST 3RD
11:00AM-1:00PM



THE GREATEST BBQ
2358 Texas Parkway
Missouri City, TX 77489



MORE INFORMATION



Carla Wilkins
(281) 633-7400

Eagle News

THE MAGICAL WORLD OF LEARNING

08.09.2024



Greetings parents we have made it through our first week of school with great success. There were many magical moments in the hallways of Glover as students learned expectation and made lasting friendships. Please be advised only new students may be escorted to class starting Monday. For the safety of you and your student **ALL CAR RIDERS must be dropped off and picked up in the CAR RIDER LINE.**

**Thank you for helping Glover be
A Magical World of Learning.**

Back to School Tasks

1. Skyward Family Access is now open! ~ To update forms electronically, log in to Family Access, click on student's information and sign and date the forms. You will need to complete one set of forms for each student. Starting the first week in August, GE parents can view teacher assignments and student schedules in Skyward Family Access only if all forms have been completed electronically.
2. The Fort Bend ISD School Supply List can be found on the district webpage.
3. You can find parent resources on the FBISD main webpage. Information on the site includes bus routes, extended learning, a district calendar, and more!
4. . The 2024-2025 Free and Reduced Meal Application is now open. Please make sure to complete the application to ensure we can continue to receive funding to support student learning.
5. EGE Friday Newsletter will be sent at the end of each instructional week via Blackboard Connect.
Please update your contact information, so your family receives this weekly update.

What's In This Month's Issue?

- Welcome Back
- Back to School Tasks
- Upcoming Events
- Meet the Teacher Night
- T-Shirt Pre-Sale
- FBISD Parent Resources Links
- Extended Day Flyer



Contact Us

Principal Arana
clementine.arana@fortbendisd.com

Assistant Principal Allen
carissa.allen@fortbendisd.com



FBISD Parent Links & Resources

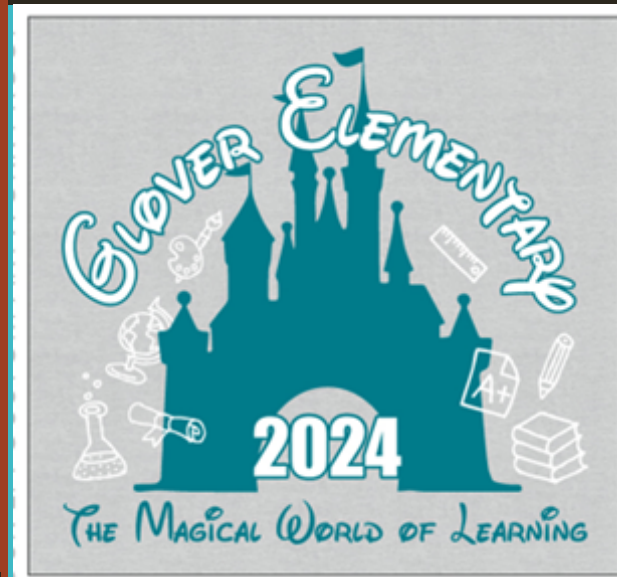
- [Volunteer Background Check](#)
- [GE Parent/Student Handbook](#)
- [Free and Reduced Lunch Application](#)
- [Parent Resources](#)
- [GE Twitter](#)
- [GE Website](#)
- [FBISD 24-25 Calendar](#)
- [Student Code Of Conduct](#)
- [GT Newsletter](#)

Purchase Your Glover T-Shirt

Shirts are \$20.00 each!

Select your shirt size, then select "add to cart" for appropriate student or add new student by entering the last name and student ID number (leave off the leading zero).

To add more than one item, make your selection and "Add to Cart", then use the "continue shopping" button. Once you have all items in your cart, you may "Checkout" once for all items in shopping cart.



UPCOMING EVENTS!

Wednesday August 21st - Brighter Bites

Monday September 2nd - Labor Day (No School)

Friday September 6th- Grandparents Luncheon

Thursday September 12th - Open House

Thursday September 26th - Early Release/Parent Conference Day (12:10 p.m.)

Friday September 27th- Student Holiday (No School)

For More Information Call

Lady Jade Claborn

281.634.0116

**Jade.Claborn@fortbendis.
gov**



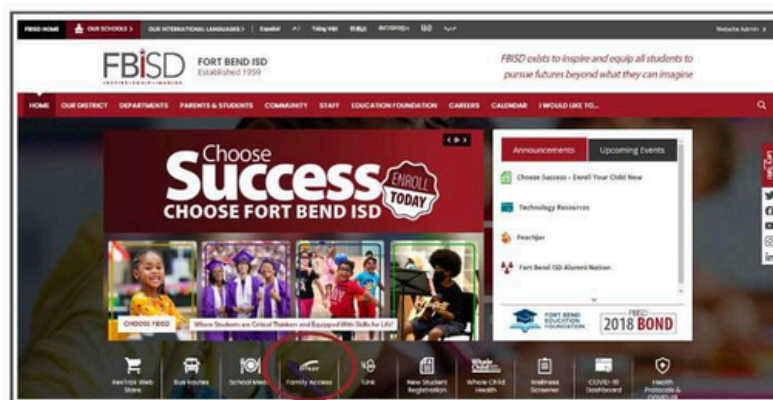
Update your student's information online!

In advance of the 2024-2025 school year, parents are asked to log into Family Access to update their student's information forms. These forms are required for all students, both returning and new to Fort Bend ISD. Parents without Family Access accounts may request access from their student's home campus. Please note, the 2024-25 FBISD Student/Parent Handbook and Student Code of Conduct will be available for review on the Student Affairs website.



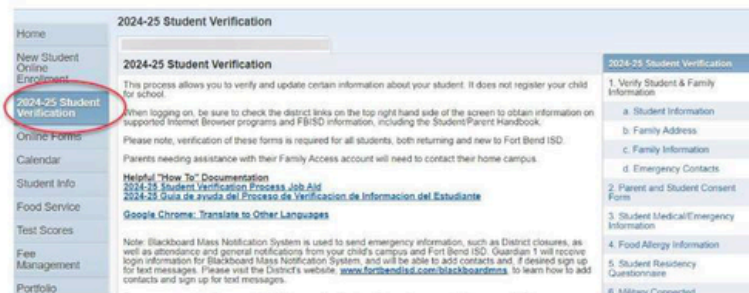
The following forms are part of this year's online verification process:

- **Student & Family Information Verification**
Verify and update parent contact information and more. Note: A portion of this information will affect default communications from Blackboard Connect, the FBISD mass notification system.*
- **Parent and Student Consent Form**
This checklist addresses the directory information, photo release and your student's technology use.
- **Medical/Emergency Information**
- **Student Residency Questionnaire**
- **Military Connected Form**
- **Student BYOD (Bring Your Own Device) Use Agreement**
- **Migrant Family Survey**
- **Child Nutrition Acknowledgment**
Visit www.fortbendisd.com/childnutrition.
- **Grade-Specific Opt-In & Notification Forms**



Log In Here

Next Click Here



For assistance with the Student Verification Process, please visit: <https://www.fortbendisd.com/skywardparenthelp>

**Blackboard Mass Notification System is used to communicate District closures and other messages from your child's campus. Please visit the District's website, www.fortbendisd.com/blackboardmns to learn how to add contacts and sign up for text messages.*

Important Resources for Parents

As a reminder, parents can also find more helpful information regarding:

- **Education Foundation** - www.fortbendisd.com/foundation
- **Extended Learning** - www.fortbendisd.com/extendedlearning
- **Dietary Accommodations** - www.fortbendisd.com/specialdiet
- **McKinney-Vento Program** - www.fortbendisd.com/mckinneyvento



Important Campus Reminders

1. Parents, please ensure all students are being dropped off through the car rider line. Due to safety concerns, please **only park and walk students to the front office if you are meeting with a staff member** or unless it is 8:05 a.m. and you are signing your child in for late arrival. **Also, for dismissal, parents should not walk up to the car rider line to pick a student up.** If you want to walk and meet your student, students should be listed as a walker, and you can meet them on the side of the school across from the bus ramp.
2. **Campus Behavior Expectations** – Parents, please review our schoolwide expectations with your students. We expect S.O.A.R. S.O.A.R. stands for Safety, Ownership, Achievement, and Respect. We want to focus on these traits to ensure we have a safe, positive environment conducive to learning.
3. Check out this month's GT [newsletter](#) for information of FBISD's Gifted and Talented Program.

SAFETY IS MAGICAL

- 1. Starting Monday morning, NO PARENT DROP OFF in the front parking lot and walking across to drop off kids. All parents must go through the car rider line**
- 2. Afternoon dismissal Columbia blue—NO GUARDIANS should park on the side and walk up to the bus ramp. All walkers will be escorted to the designated corners and will cross the street monitored by the crossing guards to meet their parents. This is a major safety concern.**

If transportation changes email the teacher and call the front office at (281) 634-4920.

- All CAR RIDERS must be picked up and dropped off in the car rider line.**
- NO drop off at the BUS RAMP.**
- NO PARKING and walking your student in.**
- PLEASE follow traffic laws on and around campus during pickup and drop off.**

Fort Bend ISD PD will be on and around campus for you and your students safety lets work together as a campus to be successful and safe!



GLOVER ELEMNTARY



Parent/Student Handbook Quick Reference Sheet

Please visit the GE Webpage for the link to access the full Parent & Student Handbook.



1

SCHOOL HOURS

School hours are from 8:05-3:25
Campus is open for students from 7:30-4:00 p.m.
Students are able to get breakfast from 7:30- 8:10.



2

COMMUNICATION

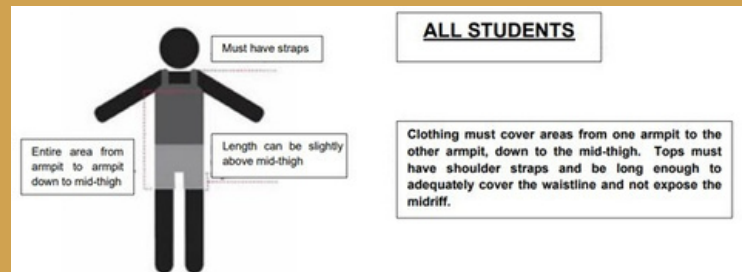
Glover Elementary will use multiple methods to communicate between the campus and families. These include **Blackboard (mass email), Schoology, Skyward, Class Dojo, X, Glover Webpage, and printed flyers in the Tuesday Folders.**



3

DRESS CODE

All students are expected to adhere to the FBISD dress code policy. Students should be dressed appropriately keeping weather in mind. Students are not allowed to wear any unsafe shoes (slides, bubble shoes, foam clogs, etc.)



4

ATTENDANCE

Attendance in school is critical to the overall success of a student. Students are expected to be at school daily and on time. If a student is absent, **please submit an excuse note within 5 days. Failure to attend can result in retention.**

ATTEND TODAY, ACHIEVE TOMORROW

GOOD SCHOOL ATTENDANCE MEANS...



PRESCHOOLERS
Build skills and develop good habits for showing up on time



ELEMENTARY STUDENTS
Read well by the end of third grade



MIDDLE SCHOOLERS
Pass important courses



HIGH SCHOOLERS
Stay on track for graduation



COLLEGE STUDENTS
Earn their degrees



WORKERS
Succeed in their jobs



6

CAMPUS VISITATION

The safety of our students and staff is our **top priority**. Any visitor must adhere to our campus/district policy. All visitors must check in at the front office and have a badge. Visitors are not allowed in any instructional areas without approval from campus administrators and an escort from and to the front lobby. Parents wanting to observe instruction, must schedule appointment at least 48 hours in advance.



6

GRADES

All student grades are posted electronically via Skyward. Parents can access Skyward by visiting Fort Bend ISD Skyward Family Access. Printed copies of report cards can be requested through the ADA clerk.

Grades will be updated weekly. Teachers will communicate with parents if students are in danger of failing.



8

FIELD TRIPS

Teachers will plan field trips for students to attend as enrichment of the school curriculum and be in compliance with the FBISD safety and security protocol. All students **must have a signed permission slip** to attend. Parents wanting to attend as a chaperone must complete the **VIP background check**. Student safety is a top priority, therefore students must exhibit positive behavior before and during any field trip.



9

ADDRESSING CONCERNS

Parents should first reach out to their child's teacher to address any concerns. A parent/teacher conference can be made during teacher planning time or before/after school. If the issue has not been resolved, parents may then contact the Counselor or Assistant Principal via email or phone call to schedule a meeting. All staff will respond within **24 to 48 hours**.



7

BEHAVIOR EXPECTATIONS

All Glover Elementary students are subject to following FBISD's Student Code of Conduct. At Glover Elementary we strive for our students to S.O.A.R. S.O.A.R. represents our school wide expectations of **Safety, Ownership, Achievement, and Respect**.

Students will be consistently taught and reminded of the specific guidelines for success daily in all areas of the campus to help them learn and create a positive and fun learning environment. Behavior interventions and consequences will be given if students fail to adhere to the campus expectations.

Edgar Glover Elementary Guidelines for Success

	Arrival & Dismissal	Hallway	Cafeteria	Restroom	Recess	Classroom
Safety	Keep hands, feet, and objects to yourself Stay in assigned area	Report problems to adult immediately Stay with your class Walking feet Keep hands and feet to yourself	Handle, feet, objects, and food to yourself Wait your turn Stay seated in assigned spot Eat your own food	Report problems immediately Request everyone's privacy Keep hands and feet to yourself	Level 4 noise Handle, feet, and objects to yourself Be silent please Play nicely	Use words to communicate feelings Stay seated unless given permission Use materials correctly Hands and feet to yourself
Ownership	Know your location Walk directly to your area Sit in assigned spot Silent Reading	Follow expectations at all times Stay on the right side of the hallway	Use good table manners Know your lunch number	Make good choices Use equipment appropriately	Be prepared Report problems to the adults immediately	Be honest Be willing to try new things Believe in yourself
Achievement	3- Inches away from the wall 2- Hands by your side 1- Straight line 0- Voice level	3- Inches away from the wall 2- Hands by your side 1- Straight line 0- Voice Level	Follow all directions Clean your area Level 1 noise	Use restrooms and flush Wash hands Throw away trash properly	Listen for directions Use the equipment safely	Participate Do your best work Apply what you know
Respect	Keep hands, feet, and objects to yourself Listen to all staff members Be Kind	Silent greetings Be Kind	Say please and thank you Use kind words Raise your hand if you need help	Wait your turn Take care of your business quickly and quietly Voice level 1	Use kind words Wait your turn	Take care of the room and materials Be Kind Work Cooperatively



10

CELL PHONES

Cell phones should be turned off and not visible at all times during the school day on school property. Cell phones are not allowed at recess. Students in violation of the FBISD cell phone policy are subject to certain actions such as confiscation of the phone until the end of the school day, parent pickup and fine, and/or disciplinary action as outlined in FBISD Student Code of Conduct.

11

SCHEDULE OVERVIEW

	Ancillary	Recess	Lunch	Intervention
Kindergarten	12:10-12:55	10:00-10:30	10:30-11:00	8:45-9:30
1st Grade	1:50-2:35	10:30-11:00	11:00-11:30	1:00-1:45
2nd Grade	1:00-1:45	11:05-11:35	11:35-12:05	10:15-11:00
3rd Grade	10:55-11:40	11:40-12:10	12:10-12:40	9:30-10:15
4th Grade	10:05-10:50	12:10-12:45	12:40-1:10	11:00-11:45
5th Grade	9:15-10:00	12:40-1:10	1:10-1:40	11:45-12:30



Glover Elementary

Attendance Matters!

Plan Ahead.



24-25 School Info

- School begins on Aug. 8 and ends May 29.
- School Hours - 8:05 am - 3:25 pm
- Students are marked tardy after 8:05 am and absent after 10:00 am.
- No Early Pickups after 3:00.

Student Breaks

Thanksgiving Break - Nov. 25-29

Winter Break - Dec. 23-Jan. 8

Spring Break - Mar. 10-14

Fall Student Holidays

*September 2

*September 27

*October 4

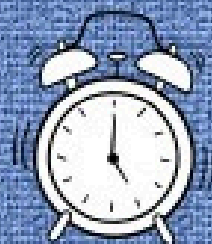
**October 10-15

*November 1

*November 11

*3-Day Weekend

**5-Day Weekend



Spring Student Holidays

*January 20

^February 14-17

*February 28

*March 31

^April 18-21

*May 26

*3-Day Weekend

^4-Day Weekend

Early Dismissal Days

September 26

December 20

February 13

May 29

Students Dismissed at 12:10 pm

We encourage scheduling trips and appointments during student holidays to help minimize preventable absences.



GLOVER ES PTO

The Glover PTO needs

YOU!

WHY JOIN THE PTO?



YOU BENEFIT

Volunteering your time, talents, and energy while socializing with other parents is fun, healthy and rewarding. Being able to contribute and make a positive impact is fulfilling!



OUR SCHOOL BENEFITS

Help create positive, caring and engaging community by supporting the scholars, teachers and administration!



OUR COMMUNITY BENEFITS

Teamwork makes the dream work! By working together we are able to have a positive impact in the world around us.

ANYONE CAN JOIN THE GLOVER PTO!

EMAIL EDGARGLOVERPTO@GMAIL.COM OR JOIN US FOR OUR MONTHLY MEETINGS.



GLOVER ES PTO

Parents & Teachers - We will start collecting dues in September!

Thank you for all of your donations last school year. If you need a receipt please email edgargloverpto@gmail.com

PRESIDENT

Mikole M.

SECRETARY

Marie T.

TREASURER

Josie B.

CURRENT EVENTS

- Meet the Teacher 8/6 5:30pm
- PTO Meeting - 8/21 3:45pm
Location TBD
- PTO Meeting - 9/18
- PTO Meeting - 10/16

STAY IN TOUCH

FOLLOW US ON X (TWITTER)
[@GLOVER_PTO](https://twitter.com/GLOVER_PTO)

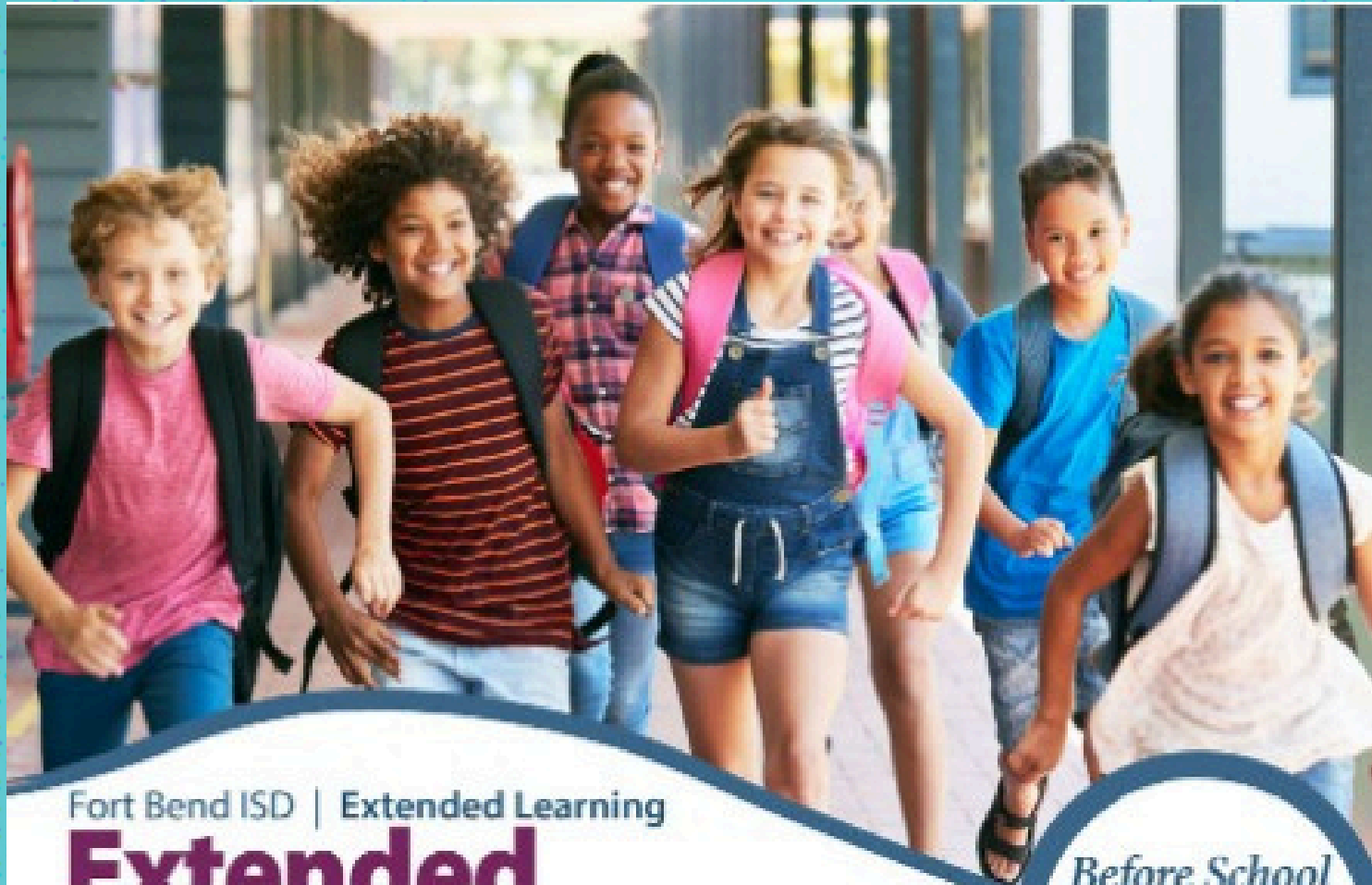
SEND AN EMAIL TO GET ON THE
PTO EMAIL LIST
EDGARGLOVERPTO@GMAIL.COM



Glover PTO
Scan to pay \$GloverPTO

If you are interested in holding an office or volunteering this school year, please email edgargloverpto@gmail.com for more information.

News & Events



Fort Bend ISD | Extended Learning

Extended Day Program

The Extended Day Program is for students in kindergarten through Grade 5, open before and after school to keep students safe and engaged.



Homework Time



SPARK Curriculum
and Clubs



Physical Activities

Program Options:

Morning Only
Afternoons Only
Morning & Afternoon Combo

Tuition is paid monthly.

Early Dismissal Day and
Full Service Day child
care is available.

Before School

6:30 a.m. - 7:30 a.m.

After School

3:25 p.m. - 6:30 p.m.

To register, go to
fortbendisd.reg.eleyo.com

ExtendedLearning@fortbendisd.com
fortbendisd.com/ExtendedLearning





brighterbites®



Enroll in Brighter Bites!

School Year 2023 - 2024

Brighter Bites is a new kind of nutrition education program, and it's 100% free! You and your child are invited to a fun food experience where you'll receive ~20 pounds of fresh fruits and vegetables along with tips and tools to support a healthy lifestyle.

Benefits of enrolling in Brighter Bites:

- receive a variety of free fresh fruits & vegetables each Brighter Bites day!
- save money on groceries
- save time at the store
- get involved in your community
- socialize with other parents
- learn how to be healthy on a budget
- discover easy, kid-friendly healthy recipes

**Participation in Brighter Bites does not affect SNAP or WIC benefits.*

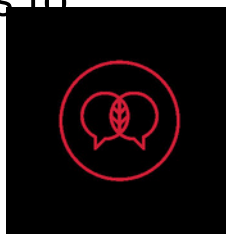


**CLICK TO
ENROLL TODAY!**

OR VISIT

WWW.BRIGHTERBITES.ORG/ENROLL

*Brighter Bites accepts new enrollments throughout
the school year!*



***"Brighter Bites is a
chance to have
more fresh fruits and
vegetables in our home.
My child loves beets
and papaya now!
Thank you,
Brighter Bites!"
- Happy parent***



The better we nourish, the brighter we flourish.

AUSTIN • BAKERSFIELD • DALLAS • HOUSTON • LOS ANGELES • NYC • PHOENIX
SALINAS • SAN ANTONIO • SOUTHWEST FLORIDA • WASHINGTON, D.C.

WWW.BRIGHTERBITES.ORG



MISSOURI CITY BRANCH LIBRARY

1530 Texas Parkway, Missouri City, TX 77489

YOU'RE INVITED!

Teacher in the Library Launch Party!



10:30 am - 12:30 pm

- Informational Tables
- Meet the Teachers
- Food Trucks

11:30 am

- County Judge KP George
- Commissioner
Grady Prestage
- Marshall High School
Drumline

Informational Tables

Boys and Girls Club Stafford, Friends of the Library, HEB,
Missouri City Green, Missouri City Station #3 Fire Department

Sat, Aug 17 • 10:30 am - 12:30 pm

Eagle News

THE MAGICAL WORLD OF LEARNING

08.23.2024



This classroom week has wound down with great success. The Family Center wants to give a big shout out to the parents who made appointments and completed their beginning of the year applications. This week was also our first Brighter Bites Distribution. If you missed please be sure to sign-up for our next distribution for your bag of FREE produce and the next volunteer opportunity. Family lunches start next week and we hope to see you there!

Read More Comics On [Houstonchronical.com/comics](https://www.houstonchronical.com/comics)

What's In This Month's Issue?

- Welcome Back
- Upcoming Events
- FBISD Parent Resources Links
- Campus Event Flyer
- Brighter Bites
- Family Tips From our Practical Parent Education Curriculum



Safety IS Magical

If transportation changes email the teacher and call the front office at (281) 634-4920.

- All CAR RIDERS must be picked up and dropped off in the car rider line.
- NO drop off at the BUS RAMP.
- NO PARKING and walking your student in.
- PLEASE follow traffic laws on and around campus during pickup and drop off.

Fort Bend ISD PD will be on and around campus for you and your students safety lets work together as a campus to be successful and safe!



FORT BEND COUNTY LIBRARIES
Enriching Lives & Expanding Minds

Click The Icon for Upcoming Events

For More Information Call

Lady Jade Claborn

281.634.0116

Jade.Claborn@fortbendisd.gov

UPCOMING EVENTS!

Monday August 26th - Family Lunches Begin

August 26th - Sept 25th BOY Testing

Monday September 2nd - Labor Day (No School)

Wednesday September 4th - Brighter Bites

Friday September 6th- Grandparents Luncheon

Thursday September 12th - Open House

Thursday September 26th - Early Release/Parent
Conference Day (12:10 p.m.)

Friday September 27th- Student Holiday (No School)

FBISD Parent Links & Resources

- [Volunteer Background Check](#)
- [GE Parent/Student Handbook](#)
- [Free and Reduced Lunch Application](#)
- [Parent Resources](#)
- [GE Twitter](#)
- [GE Website](#)
- [FBISD 24-25 Calendar](#)
- [Student Code Of Conduct](#)
- [GT Newsletter](#)



Principal Arana
clementine.arana@fortbendisd.gov

Assistant Principal Allen
carissa.allen@fortbendisd.gov

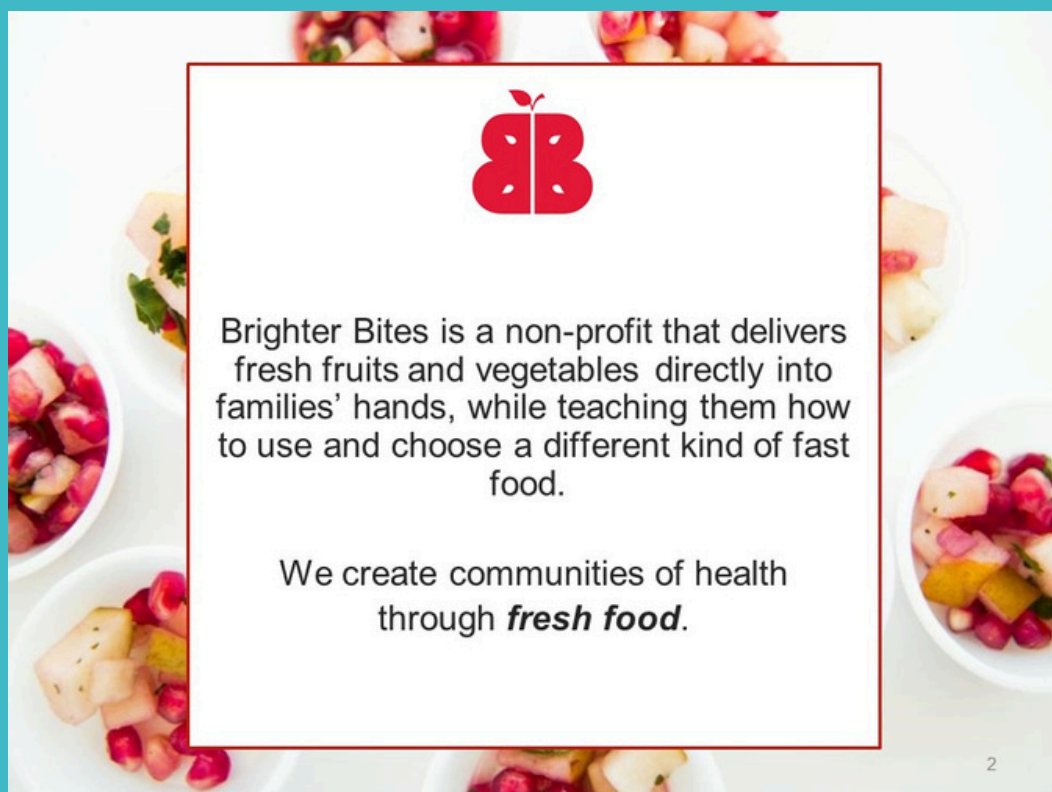
Parent Educator Lady Jade
Jade.Claborn@fortbendisd.gov



**FREE FRESH Produce Pick Up For
All Glover Families
September 4th
Sign Up Now For Your FREE
Brighter Bites Fruits and
Veggies Bag!
Pick-Up: 2pm-4**

**Volunteers
Needed:
Volunteer Bagging
September 4th
10am- 12**

**Call Lady Jade
281.634.0116
Jade.Claborn@
Fortbendisd.gov**



2



GLOVER ELEMNTARY



Parent/Student Handbook Quick Reference Sheet

Please visit the GE Webpage for the link to access the full Parent & Student Handbook.



1

SCHOOL HOURS

School hours are from 8:05-3:25
Campus is open for students from 7:30-4:00 p.m.
Students are able to get breakfast from 7:30- 8:10.



2

COMMUNICATION

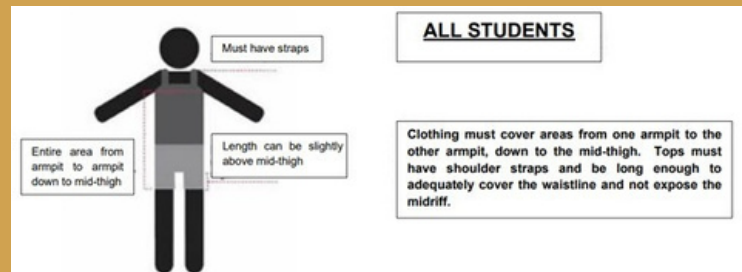
Glover Elementary will use multiple methods to communicate between the campus and families. These include **Blackboard (mass email), Schoology, Skyward, Class Dojo, X, Glover Webpage, and printed flyers in the Tuesday Folders.**



3

DRESS CODE

All students are expected to adhere to the FBISD dress code policy. Students should be dressed appropriately keeping weather in mind. Students are not allowed to wear any unsafe shoes (slides, bubble shoes, foam clogs, etc.)



4

ATTENDANCE

Attendance in school is critical to the overall success of a student. Students are expected to be at school daily and on time. If a student is absent, **please submit an excuse note within 5 days. Failure to attend can result in retention.**

ATTEND TODAY, ACHIEVE TOMORROW

GOOD SCHOOL ATTENDANCE MEANS...



6

CAMPUS VISITATION

The safety of our students and staff is our **top priority**. Any visitor must adhere to our campus/district policy. All visitors must check in at the front office and have a badge. Visitors are not allowed in any instructional areas without approval from campus administrators and an escort from and to the front lobby. Parents wanting to observe instruction, must schedule appointment at least 48 hours in advance.



6

GRADES

All student grades are posted electronically via Skyward. Parents can access Skyward by visiting Fort Bend ISD Skyward Family Access. Printed copies of report cards can be requested through the ADA clerk.

Grades will be updated weekly. Teachers will communicate with parents if students are in danger of failing.



8

FIELD TRIPS

Teachers will plan field trips for students to attend as enrichment of the school curriculum and be in compliance with the FBISD safety and security protocol. All students **must have a signed permission slip** to attend. Parents wanting to attend as a chaperone must complete the **VIP background check**. Student safety is a top priority, therefore students must exhibit positive behavior before and during any field trip.



9

ADDRESSING CONCERNS

Parents should first reach out to their child's teacher to address any concerns. A parent/teacher conference can be made during teacher planning time or before/after school. If the issue has not been resolved, parents may then contact the Counselor or Assistant Principal via email or phone call to schedule a meeting. All staff will respond within **24 to 48 hours**.



7

BEHAVIOR EXPECTATIONS

All Glover Elementary students are subject to following FBISD's Student Code of Conduct. At Glover Elementary we strive for our students to S.O.A.R. S.O.A.R. represents our school wide expectations of **Safety, Ownership, Achievement, and Respect**.

Students will be consistently taught and reminded of the specific guidelines for success daily in all areas of the campus to help them learn and create a positive and fun learning environment. Behavior interventions and consequences will given if students fail to adhere to the campus expectations.

Edgar Glover Elementary Guidelines for Success

	Arrival & Dismissal	Hallway	Cafeteria	Restroom	Recess	Classroom
Safety	Keep hands, feet, and objects to yourself Stay in assigned area	Report problems to adult immediately Stay with your class Walking feet Keep hands and feet to yourself	Handle, feet, objects, and food to yourself Wait your turn Stay seated in assigned spot Eat your own food	Report problems immediately Request everyone's privacy Keep hands and feet to yourself	Level 4 noise Handle, feet, and objects to yourself Be silent Play nicely	Use words to communicate feelings Stay seated unless given permission Use materials correctly Hands and feet to yourself
Ownership	Know your location Walk directly to your area Sit in assigned spot Silent Reading	Follow expectations at all times Stay on the right side of the hallway	Use good table manners Know your lunch number	Make good choices Use equipment appropriately	Be prepared Report problems to the adults immediately	Be honest Be willing to try new things Believe in yourself
Achievement	3- Inches away from the wall 2- Hands by your side 1- Straight line 0- Voice level	3- Inches away from the wall 2- Hands by your side 1- Straight line 0- Voice Level	Follow all directions Clean your area Level 1 noise	Use restrooms and flush Wash hands Throw away trash properly	Listen for directions Use the equipment safely	Participate Do your best work Apply what you know
Respect	Keep hands, feet, and objects to yourself Listen to all staff members Be Kind	Silent greetings Be Kind	Say "please" and "thank you" Use kind words Raise your hand if you need help	Wait your turn Take care of your business quickly and quietly Voice level 1	Use kind words Wait your turn	Take care of the room and materials Be Kind Work Cooperatively



10

CELL PHONES

Cell phones should be turned off and not visible at all times during the school day on school property. Cell phones are not allowed at recess. Students in violation of the FBISD cell phone policy are subject to certain actions such as confiscation of the phone until the end of the school day, parent pickup and fine, and/or disciplinary action as outlined in FBISD Student Code of Conduct.

11

SCHEDULE OVERVIEW

	Ancillary	Recess	Lunch	Intervention
Kindergarten	12:10-12:55	10:00-10:30	10:30-11:00	8:45-9:30
1st Grade	1:50-2:35	10:30-11:00	11:00-11:30	1:00-1:45
2nd Grade	1:00-1:45	11:05-11:35	11:35-12:05	10:15-11:00
3rd Grade	10:55-11:40	11:40-12:10	12:10-12:40	9:30-10:15
4th Grade	10:05-10:50	12:10-12:45	12:40-1:10	11:00-11:45
5th Grade	9:15-10:00	12:40-1:10	1:10-1:40	11:45-12:30



Glover Elementary

Attendance Matters!

Plan Ahead.



24-25 School Info

- School begins on Aug. 8 and ends May 29.
- School Hours - 8:05 am - 3:25 pm
- Students are marked tardy after 8:05 am and absent after 10:00 am.
- No Early Pickups after 3:00.

Student Breaks

Thanksgiving Break - Nov. 25-29

Winter Break - Dec. 23-Jan. 8

Spring Break - Mar. 10-14

Fall Student Holidays

*September 2

*September 27

*October 4

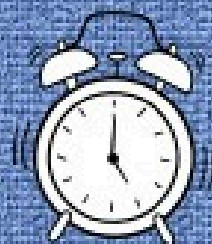
**October 10-15

*November 1

*November 11

*3-Day Weekend

**5-Day Weekend



Spring Student Holidays

*January 20

^February 14-17

*February 28

*March 31

^April 18-21

*May 26

*3-Day Weekend

^4-Day Weekend

Early Dismissal Days

September 26

December 20

February 13

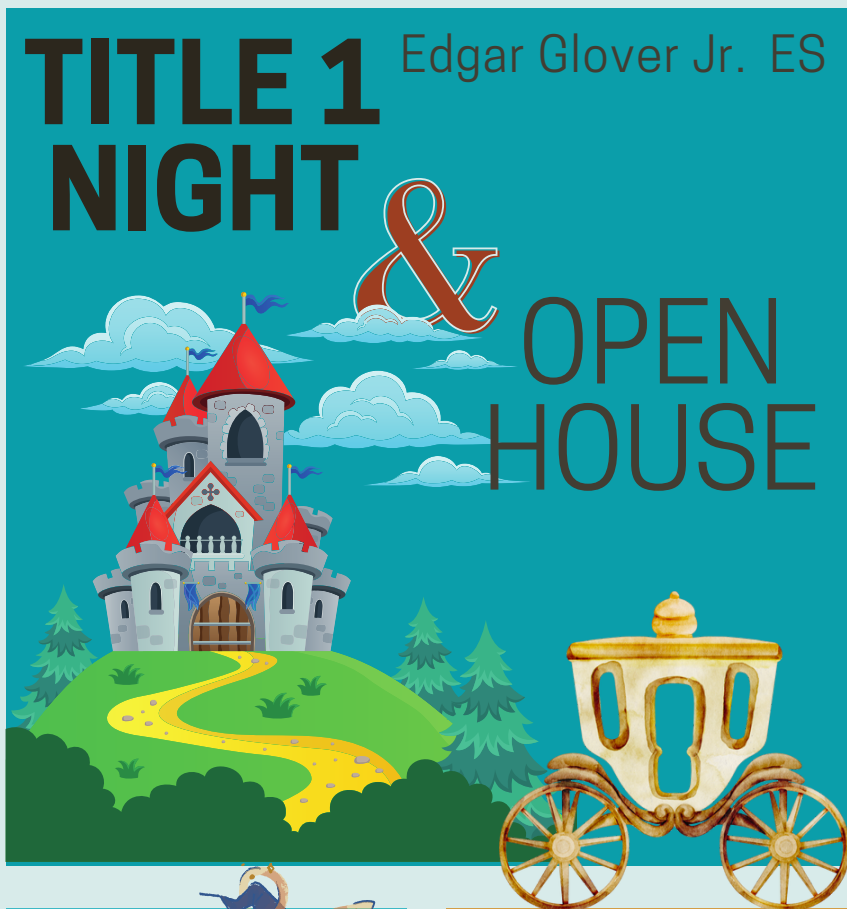
May 29

Students Dismissed at 12:10 pm

We encourage scheduling trips and appointments during student holidays to help minimize preventable absences.



Join The Magical
World of Learning
and see what
academic
adventures await
you and your
student this
school year.



**SEP
12TH
5:00**

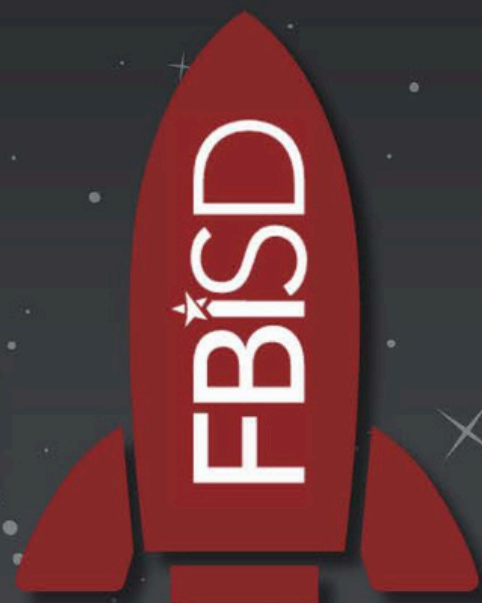
JOIN THE FUN!

1510 Columbia Blue Dr,
Missouri City, TX 77489



FOR MORE INFORMATION, CONTACT LADY JADE 281.634.0116
JADE.CLABORN@FORTBENDISD.COM

BECOME A FORT BEND ISD UPLIFT MENTOR!



WHAT TO EXPECT:

- Meet with a student once a week for 30-45 minutes.
- Read books and provide support at elementary level.
- Provide support at secondary level.



SCAN HERE!

<https://bit.ly/FBISD-Mentor>



FBISD Department of Collaborative Communities



CollaborativeCommunities@fortbendisd.com



(281)634-1109



GLOVER ES PTO

The Glover PTO needs

YOU!

WHY JOIN THE PTO?



YOU BENEFIT

Volunteering your time, talents, and energy while socializing with other parents is fun, healthy and rewarding. Being able to contribute and make a positive impact is fulfilling!



OUR SCHOOL BENEFITS

Help create positive, caring and engaging community by supporting the scholars, teachers and administration!



OUR COMMUNITY BENEFITS

Teamwork makes the dream work! By working together we are able to have a positive impact in the world around us.

ANYONE CAN JOIN THE GLOVER PTO!

EMAIL EDGARGLOVERPTO@GMAIL.COM OR JOIN US FOR OUR MONTHLY MEETINGS.



GLOVER ES PTO

Parents & Teachers - We will start collecting dues in September!

Thank you for all of your donations last school year. If you need a receipt please email edgargloverpto@gmail.com

PRESIDENT

Mikole M.

SECRETARY

Marie T.

TREASURER

Josie B.

CURRENT EVENTS

- Meet the Teacher 8/6 5:30pm
- PTO Meeting - 8/21 3:45pm
Location TBD
- PTO Meeting - 9/18
- PTO Meeting - 10/16

STAY IN TOUCH

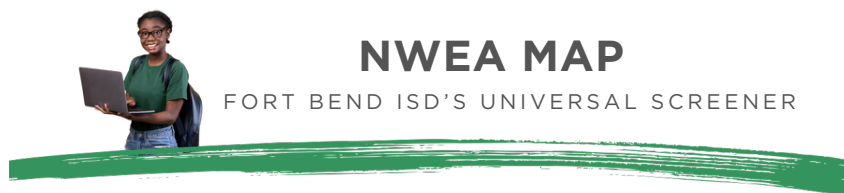
FOLLOW US ON X (TWITTER)
[@GLOVER_PTO](https://twitter.com/GLOVER_PTO)

SEND AN EMAIL TO GET ON THE
PTO EMAIL LIST
EDGARGLOVERPTO@GMAIL.COM



Glover PTO
Scan to pay \$GloverPTO

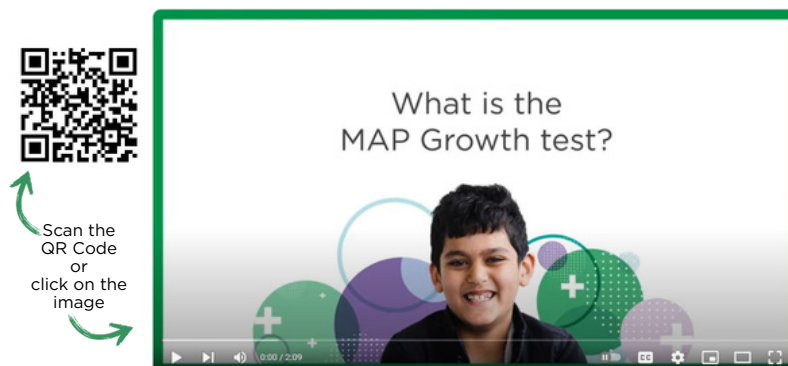
If you are interested in holding an office or volunteering this school year, please email edgargloverpto@gmail.com for more information.



Beginning this year, students in Fort Bend ISD will complete NWEA MAP computer-adaptive assessments three times a year to gain information about what students know and what they are ready to learn next. MAP also gives insight into how students are growing academically, allowing you to track your student's progress throughout the school year and across multiple years. Families will have access to their child's results after each testing window. NWEA MAP is replacing Renaissance 360. For more information, visit the NWEA Family Toolkit linked [here](#) or contact your child's teacher.

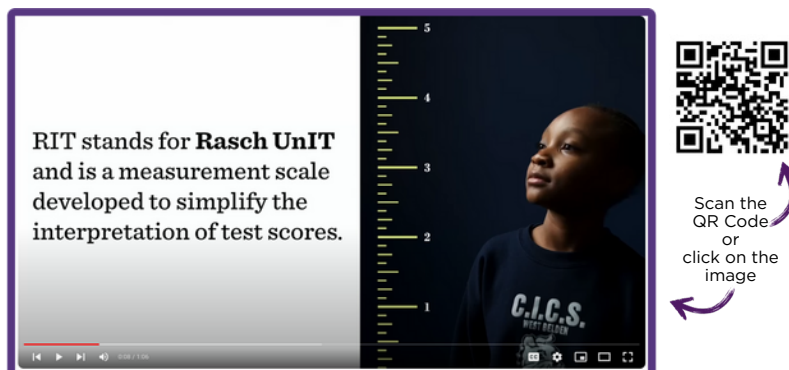
How MAP Growth Works

MAP Growth is designed to support student learning and data-informed decisions. View the video below for an overview of what you can expect when students take the MAP Growth Assessment. All students in grades K-8 and students enrolled in specific high school courses will take MAP Growth assessments.



Understanding RIT Scores

After each MAP Growth test, results are delivered in the form of a RIT score that reflects the student's academic knowledge, skills, and abilities. Think of this score like marking height on a growth chart. You can tell how tall your child is at various points in time and how much they have grown between one stage and another. View the video linked below for more information about RIT scores.



MAP Reading Fluency (Elementary Only)

MAP Reading Fluency assesses early reading skills—including letter and word recognition, oral reading fluency, and literal comprehension—to support students on their journey to independent reading. To see the assessment from a student's perspective, watch the video linked below.

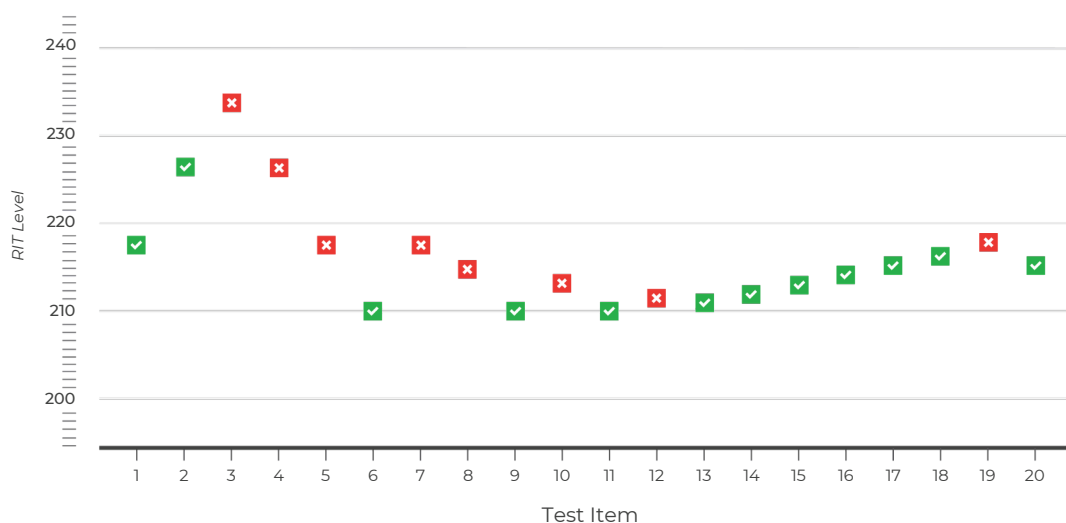


A family guide to MAP Growth

Children learn better—and faster—when teachers have a clear picture of what students know and how they are growing academically. That's why a group of educators and researchers founded NWEA®, a not-for-profit organization that has created some of the most trusted and reliable assessment solutions available. More than 13 million students in the US and in 140 countries worldwide use MAP® Growth™.

How it works

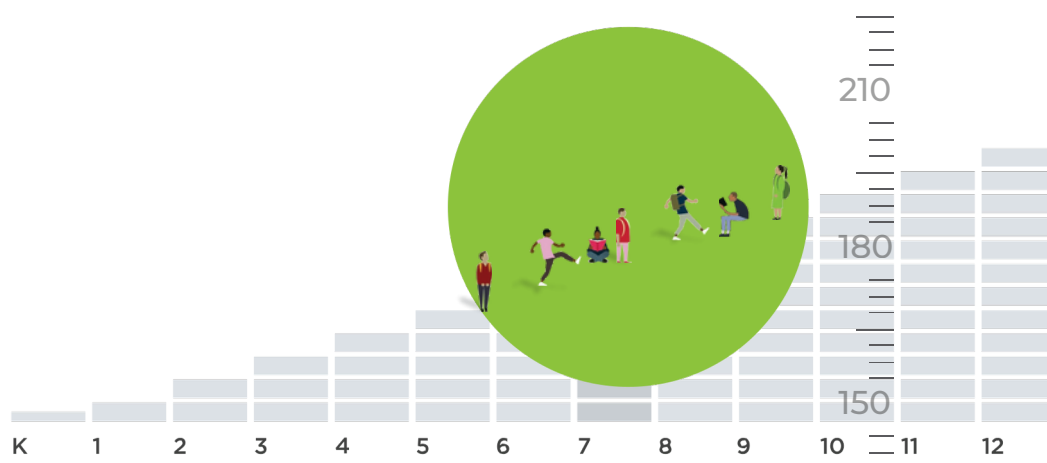
MAP Growth is a computer-adaptive test. If your child answers a question correctly, the next question is more challenging. If they answer incorrectly, the next one is easier. This type of assessment challenges top performers without overwhelming students whose skills are below grade level.



MAP Growth begins with a question at each student's grade level and adjusts the level of difficulty based on individual performance.

What it measures

MAP Growth uses a RIT scale to accurately measure what students know, regardless of their grade level. It also measures growth over time, allowing you to track your child's progress throughout the school year and across multiple years. Once your child completes a MAP Growth test, they receive a RIT score.



The RIT scale precisely measures student performance, regardless of whether they're performing on, above, or below grade level.

Your child's RIT score

RIT scores have the same meaning across grade levels. If a fourth-grade student and an eighth-grade student have the same RIT score in reading, then they are testing at the same level in that subject. This stable scale allows teachers to accurately measure each student's academic growth throughout the school year and over time.

You can use your child's RIT score to help them meet their goals. For example, students can enter their RIT scores into our college explorer tool to see which colleges and universities they're on track to enter. You can also ask your child's school about educational resources that use MAP Growth RIT scores to provide personalized learning resources.

“MAP Growth is important because it allows my teacher and me to see how much I know and my percentile growth. In math, my score used to be 227 (70th percentile), but it is now 240 (87th percentile). I didn't know I was capable of so much growth, but in the end I was.”

Kayla, 6th grade
Santa Ana, CA

COMMON QUESTIONS

How do schools and teachers use MAP Growth scores?	Teachers can use the scores to identify learning areas that their class should focus on, as well as monitor the growth of individual students. Principals and administrators can use the scores to see the performance and progress of a grade level, school, or the entire district.
Can MAP Growth tell me if my child is working at grade level?	Yes, but please note that MAP Growth scores are just one data point that teachers use to determine how a student is performing. Please discuss any questions that you have about your child's performance with their teacher.
How often will my child take MAP Growth tests?	Most schools give MAP Growth tests to students at the beginning, middle, and end of the school year (in the fall, winter, and spring). Some schools choose to administer tests only twice a year.
What are norms?	NWEA provides schools with norms by utilizing anonymous data from more than 10 million students around the US. Knowing the top, middle, and bottom scores of all these students combined allows teachers to compare where your child is to other students and help them grow. In addition, NWEA provides comparison data for private, accredited, English-based, international schools using MAP Growth outside the US.
Is MAP Growth a standardized test?	MAP Growth is administered periodically during the school year. Instead of asking all students the same questions, it adjusts to each child's performance—giving a more accurate measure of what they know. Teachers also receive results right away, which enables them to react more quickly.
What types of questions are on MAP Growth tests?	The MAP Growth tests include multiple choice, drag-and-drop, and other types of questions. For sample tests, visit Warmup.NWEA.org .

For tips on getting ready for MAP Growth testing, check out our blog:

nwea.org/blog/category/supporting-families

Find more family resources at nwea.org/familytoolkit



NWEA is a not-for-profit organization that supports students and educators worldwide by providing assessment solutions, insightful reports, professional learning offerings, and research services. Visit [NWEA.org](https://www.nwea.org) to find out how NWEA can partner with you to help all kids learn.

© 2022 NWEA. NWEA and MAP are registered trademarks, and MAP Growth is a trademark, of NWEA in the US and in other countries.

Illustrations © Adam Simpson and Heart 2017. The names of other companies and their products mentioned are the trademarks of their respective owners.

MAY22 | KAP9195

News & Events



Fort Bend ISD | Extended Learning

Extended Day Program

The Extended Day Program is for students in kindergarten through Grade 5, open before and after school to keep students safe and engaged.



Homework Time



SPARK Curriculum
and Clubs



Physical Activities

Program Options:

Morning Only
Afternoons Only
Morning & Afternoon Combo

Tuition is paid monthly.

Early Dismissal Day and
Full Service Day child
care is available.

Before School

6:30 a.m. - 7:30 a.m.

After School

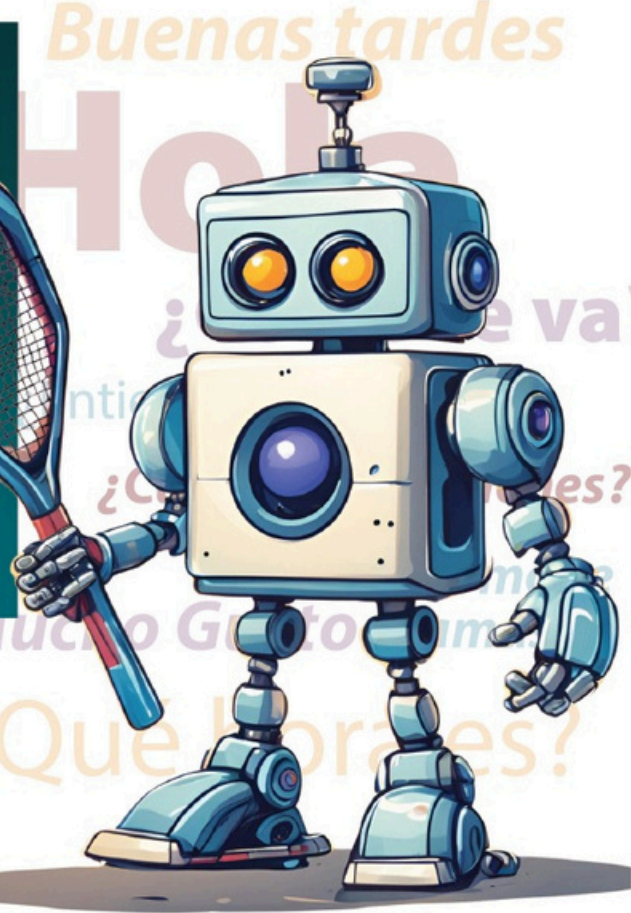
3:25 p.m. - 6:30 p.m.

To register, go to
fortbendisd.reg.eleyo.com

ExtendedLearning@fortbendisd.com
fortbendisd.com/ExtendedLearning



FBISD COMMUNITY EDUCATION



Fall 2024 Classes at
Glover

Elementary

Fun Frenzy Robotics

\$195 | Mon 9/16 - 12/9 | 3:45-4:45 pm | K-3

Basketball with Little Ballerz

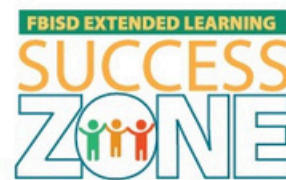
\$210 | Tue 9/17 - 12/3 | 3:45-4:45 pm | 1-5

Imagination Lab

\$175 | Wed 9/18 - 11/20 | 3:45-4:45 pm | K-3

STEP Dance Movement

\$165 | Thu 9/19 - 12/12 | 3:45-4:45 pm | 2-5



Register at
**fortbendisd.reg.
eleyo.com**

Registration
closes

September 2nd

281-634-4220

CommunityEd@fortbendisd.com

GRANDPARENTS LUNCH



It's a magical world of
learning so bring your
grandparents for the
adventure
and join us for lunch.

September 6th

LUNCH
TIME

	Lunch
Kindergarten	10:30-11:00
1st Grade	11:00-11:30
2nd Grade	11:35-12:05
3rd Grade	12:10-12:40
4th Grade	12:40-1:10
5th Grade	1:10-1:40





September Attendance Challenge

September is Attendance Awareness Month. The grade level with the **highest attendance percentage** at the end of the month will earn a grade level surprise. Students with **perfect attendance** will receive a special **reward**. Having good attendance at school is a key factor of student success. Please make sure you have your student here and on time for learning!



ATTENDANCE MATTERS

Missing a day of school here and there may not seem like much, but absences add up!

When a student misses 2 days a month..

They will miss **20 DAYS** a year.

They will miss **30 HOURS** of math over the school year.

They will miss **60 HOURS** of reading & writing over the school year.

They will miss over **1 YEAR** of school by graduation.

When a student misses 4 days a month..

They will miss **40 DAYS** a year.

They will miss **60 HOURS** of math over the school year.

They will miss **120 HOURS** of reading & writing over the school year.

They will miss over **2 YEARS** of school by graduation.



Eagle News

GLOVER ES

July 2024

Welcome Back To School!

We are thrilled that school is just a few weeks away! Your Glover Elementary School staff is eagerly anticipating the start of another exciting school year with all of you. Our dedicated team is fully committed to launching this year on a strong note. With the arrival of new staff, EGE is excited to invite our students to enter into "The Magical World of Learning". By blending the magic of Disney with educational excellence, this year's theme fosters a love for learning, inspires creativity, and builds a supportive and vibrant school community.

What's In This Month's Issue?

- Welcome Back
- Back to School Tasks Upcoming
- Events Meet the
- Teacher Night T-Shirt Pre-Sale
- FBISD Parent Resources Links
- Extended Day Flyer



Back to School Tasks

1. Skyward Family Access will open ~ SOON ~ To update forms electronically, log in to **Family Access**, click on student's information and sign and date the forms. You will need to complete one set of forms for each student. Starting the first week in August, GE parents can view teacher assignments and student schedules in Skyward Family Access only if all forms have been completed electronically.
 2. The **Fort Bend ISD School Supply List** can be found on the district webpage
 3. You can find **parent resources** on the FBISD main webpage. Information on the site includes bus routes, extended learning, a district calendar, and more!
 4. Money can be added to your child's cafeteria account throughout the school year online. To access your account, **click here**. If your student is new to the district, you must create a new account. The 2024-2025 **Free and Reduced Meal Application** will be open August 1st.
 5. EGE Friday Newsletter will be sent at the end of each instructional week via **Blackboard Connect**.
- Please update your contact information, so your family receives this weekly

update.

Meet The Teacher Night

Meet the Teacher Night will be Monday, August 6th, from 5:30 pm-6:30 pm. Meet the Teacher is a come-and go event providing families with the opportunity to meet their child's teacher, locate their child's classroom, and drop off school supplies.

To ensure that each family has a great experience at the Meet the Teacher event, we will have times to meet all staff, have a brief overview with the leadership team, and then rotations to visit classrooms. This will reduce over-crowding opportunities and provide families with siblings in grade levels to have adequate time to meet their teachers. We ask that only immediate family members attend the event.



FBISD Parent Links & Resources

- Volunteer
- Background Check
- GE Parent/Student Handbook Free
- and Reduced Lunch Application
- Parent Resources
- GE Twitter GE
- Website FBISD
- 24-25 Calendar

UPCOMING EVENTS!

Saturday July 27th - Party on the Run 11:30 a.m.

(Marshall High School)

Monday August 5th - Kindergarten Orientation 5:00

Tuesday August 6th - Meet The Teacher 5:30 p.m.

Thursday August 8th - First Day of School

Monday September 2nd - Labor Day (No School)

Friday September 6th- Grandparents Luncheon

Thursday September 26th - Early Release/Parent Conference Day (12:10 p.m.)

Friday September 27th- Student Holiday (No School)

Contact Us

Principal Arana
clementine.arana@fortbendisd.com
Assistant Principal Allen
carissa.allen@fortbendisd.com

GLOVER ELEMNTARY



Parent/Student Handbook Quick Reference Sheet

Please visit the GE Webpage for the link to access the full Parent & Student Handbook.



1

SCHOOL HOURS

School hours are from 8:05-3:25
Campus is open for students from 7:30-4:00 p.m.
Students are able to get breakfast from 7:30- 8:10.



2

COMMUNICATION

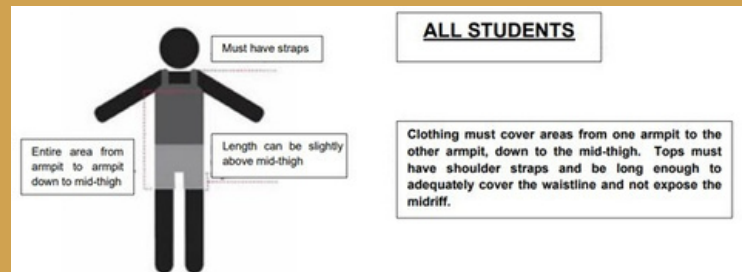
Glover Elementary will use multiple methods to communicate between the campus and families. These include **Blackboard (mass email), Schoology, Skyward, Class Dojo, X, Glover Webpage, and printed flyers in the Tuesday Folders.**



3

DRESS CODE

All students are expected to adhere to the FBISD dress code policy. Students should be dressed appropriately keeping weather in mind. Students are not allowed to wear any unsafe shoes (slides, bubble shoes, foam clogs, etc.)



4

ATTENDANCE

Attendance in school is critical to the overall success of a student. Students are expected to be at school daily and on time. If a student is absent, **please submit an excuse note within 5 days. Failure to attend can result in retention.**

ATTEND TODAY, ACHIEVE TOMORROW

GOOD SCHOOL ATTENDANCE MEANS...



6

CAMPUS VISITATION

The safety of our students and staff is our **top priority**. Any visitor must adhere to our campus/district policy. All visitors must check in at the front office and have a badge. Visitors are not allowed in any instructional areas without approval from campus administrators and an escort from and to the front lobby. Parents wanting to observe instruction, must schedule appointment at least 48 hours in advance.



6

GRADES

All student grades are posted electronically via Skyward. Parents can access Skyward by visiting Fort Bend ISD Skyward Family Access. Printed copies of report cards can be requested through the ADA clerk.

Grades will be updated weekly. Teachers will communicate with parents if students are in danger of failing.



8

FIELD TRIPS

Teachers will plan field trips for students to attend as enrichment of the school curriculum and be in compliance with the FBISD safety and security protocol. All students **must have a signed permission slip** to attend. Parents wanting to attend as a chaperone must complete the **VIP background check**. Student safety is a top priority, therefore students must exhibit positive behavior before and during any field trip.



9

ADDRESSING CONCERNS

Parents should first reach out to their child's teacher to address any concerns. A parent/teacher conference can be made during teacher planning time or before/after school. If the issue has not been resolved, parents may then contact the Counselor or Assistant Principal via email or phone call to schedule a meeting. All staff will respond within **24 to 48 hours**.



7

BEHAVIOR EXPECTATIONS

All Glover Elementary students are subject to following FBISD's Student Code of Conduct. At Glover Elementary we strive for our students to S.O.A.R. S.O.A.R. represents our school wide expectations of **Safety, Ownership, Achievement, and Respect**.

Students will be consistently taught and reminded of the specific guidelines for success daily in all areas of the campus to help them learn and create a positive and fun learning environment. Behavior interventions and consequences will given if students fail to adhere to the campus expectations.

Edgar Glover Elementary Guidelines for Success

	Arrival & Dismissal	Hallway	Cafeteria	Restroom	Recess	Classroom
Safety	Keep hands, feet, and objects to yourself Stay in assigned area	Report problems to adult immediately Stay with your class Walking feet Keep hands and feet to yourself	Hands, feet, objects, and food to yourself Wait your turn Stay seated in assigned spot Eat your own food	Report problems immediately Request everyone's privacy Keep hands and feet to yourself	Level 4 noise Hands, feet, and objects to yourself Be still please Play nicely	Use words to communicate feelings Stay seated unless given permission Use materials correctly Hands and feet to yourself
Ownership	Know your location Walk directly to your area Sit in assigned spot Silent Reading	Follow expectations at all times Stay on the right side of the hallway	Use good table manners Know your lunch number	Make good choices Use equipment appropriately	Be prepared Report problems to the adults immediately	Be honest Be willing to try new things Believe in yourself
Achievement	3- Inches away from the wall 2- Hands by your side 1- Straight line 0- Voice level	3- Inches away from the wall 2- Hands by your side 1- Straight line 0- Voice Level	Follow all directions Clean your area Level 1 noise	Use restrooms and flush Wash hands Throw away trash properly	Listen for directions Use the equipment safely	Participate Do your best work Apply what you know
Respect	Keep hands, feet, and objects to yourself Listen to all staff members Be Kind	Silent greetings Be Kind	Say please and thank you Use kind words Raise your hand if you need help	Wait your turn Take care of your business quickly and quietly Voice level 1	Use kind words Wait your turn	Take care of the room and materials Be Kind Work Cooperatively



10

CELL PHONES

Cell phones should be turned off and not visible at all times during the school day on school property. Cell phones are not allowed at recess. Students in violation of the FBISD cell phone policy are subject to certain actions such as confiscation of the phone until the end of the school day, parent pickup and fine, and/or disciplinary action as outlined in FBISD Student Code of Conduct.

11

SCHEDULE OVERVIEW

	Ancillary	Recess	Lunch	Intervention
Kindergarten	12:10-12:55	10:00-10:30	10:30-11:00	8:45-9:30
1st Grade	1:50-2:35	10:30-11:00	11:00-11:30	1:00-1:45
2nd Grade	1:00-1:45	11:05-11:35	11:35-12:05	10:15-11:00
3rd Grade	10:55-11:40	11:40-12:10	12:10-12:40	9:30-10:15
4th Grade	10:05-10:50	12:10-12:45	12:40-1:10	11:00-11:45
5th Grade	9:15-10:00	12:40-1:10	1:10-1:40	11:45-12:30



Glover Elementary

Attendance Matters!

Plan Ahead.



24-25 School Info

- School begins on Aug. 8 and ends May 29.
- School Hours - 8:05 am - 3:25 pm
- Students are marked tardy after 8:05 am and absent after 10:00 am.
- No Early Pickups after 3:00.

Student Breaks

Thanksgiving Break - Nov. 25-29

Winter Break - Dec. 23-Jan. 8

Spring Break - Mar. 10-14

Fall Student Holidays

*September 2

*September 27

*October 4

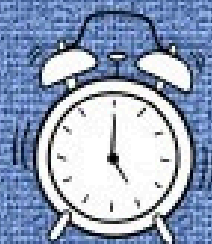
**October 10-15

*November 1

*November 11

*3-Day Weekend

**5-Day Weekend



Spring Student Holidays

*January 20

^February 14-17

*February 28

*March 31

^April 18-21

*May 26

*3-Day Weekend

^4-Day Weekend

Early Dismissal Days

September 26

December 20

February 13

May 29

Students Dismissed at 12:10 pm

We encourage scheduling trips and appointments during student holidays to help minimize preventable absences.



GLOVER ES PTO

Parents & Teachers - We will start collecting dues in September!

Thank you for all of your donations last school year. If you need a receipt please email edgargloverpto@gmail.com

PRESIDENT

Mikole M.

SECRETARY

Marie T.

TREASURER

Josue B.

STAY IN TOUCH

FOLLOW US ON X (TWITTER)
@GLOVER_PTO

**SEND AN EMAIL TO GET ON THE
PTO EMAIL LIST
EDGARGLOVERPTO@GMAIL.COM**

CURRENT EVENTS



JULY 27TH, 2024

PARTY ON "THE RUN"

**MARSHALL HIGH SCHOOL FEEDER PATTERN
COME PARTY WITH US!**

TIME: 11:30-1:30 PM **MEET THE PRINCIPALS!!**

COMMUNITY PARTNERSHIP WITH IMAGINE EXCELLENCE, INC LEADERSHIP ORGANIZATION

THURGOOD MARSHALL HIGH SCHOOL
1220 BUFFALO RUN, MISSOURI CITY, TX 77489

If you are interested in holding an office or volunteering this school year, please email edgargloverpto@gmail.com for more information.

News & Events



Fort Bend ISD | Extended Learning

Extended Day Program

The Extended Day Program is for students in kindergarten through Grade 5, open before and after school to keep students safe and engaged.

Before School
6:30 a.m. - 7:30 a.m.

After School
3:25 p.m. - 6:30 p.m.

 Homework Time

 SPARK Curriculum and Clubs

 Physical Activities

Program Options:
Morning Only
Afternoons Only
Morning & Afternoon Combo

Tuition is paid monthly.
Early Dismissal Day and Full Service Day child care is available.

To register, go to fortbendisd.reg.eleyo.com

ExtendedLearning@fortbendisd.com
fortbendisd.com/ExtendedLearning



brighterbites®

Brighter Bites Enrollment
Sign up for Brighter Bites today!

 Formsite

Enroll in Brighter
Bites for the 24-25
School Year!